

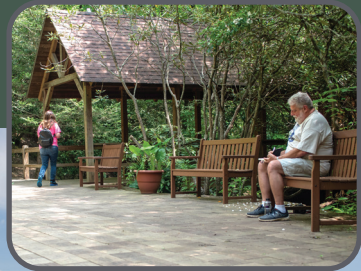
# A BEAUTIFUL PLACE WITH EVERYTHING YOU NEED

## This is Ridgecrest.

Ridgecrest is the premier Christian conference center for your meeting, event or spiritual retreat. Nestled in the picturesque Blue Ridge Mountains of western North Carolina, distractions from everyday life fall away the moment you arrive.

We are a ministry serving ministries like yours, offering first-class customer service within a loving, servant-minded, Christian environment. Before you even set foot on campus, our staff and volunteers are praying for you, your event and your guests. We understand your event needs and unique challenges and work tirelessly to help you and your guests experience all that Ridgecrest has to offer—on budget, with high impact, for God's glory.

God changes lives at Ridgecrest. Why not come and discover it for yourself?





JOHNSON SPRING

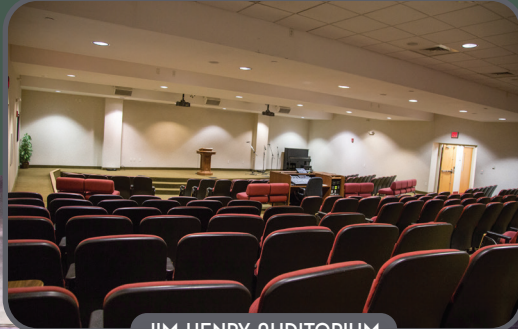
## Auditoriums

While the outward beauty of Ridgecrest's buildings blends snugly with the surrounding mountains, visitors are often surprised by the abundance and diversity of meeting space available for general sessions.

At Ridgecrest, we offer everything you need to host your conference, meeting, retreat or event. Our larger venues offer advanced audiovisual and lighting equipment, perfect for general sessions, concerts, worship services and meetings.



LAMBDIN



JIM HENRY AUDITORIUM



SPILMAN AUDITORIUM



CRYSTAL SPRINGS AMPHITHEATER

## Meeting Rooms

Meeting rooms in Mountain Laurel, Rhododendron, Dogwood, Lambdin, Ivy and Spilman utilize partitions to provide various dimensions appropriate for the space needs of any sized gathering—meetings, teaching sessions, conferences or banquets and receptions. Ridgecrest's professional AV staff works closely with meeting planners to ensure every presentation, session and meeting runs smoothly.



MOUNTAIN LAUREL



SPILMAN GREEN ROOM



JOHNSON SPRING



# MEETING ROOM SPECIFICATIONS



CLASSROOM



ROUNDS



THEATER

DOGWOOD

ROOMS	ROOM SIZE	CLASSROOM	ROUNDS	THEATER
1 A-C	32'x92'	88	152	200
1 A	32'x23'	20	48	50
1 B	32'x25'	24	48	60
1 C	32'x44'	48	96	90
2 A-D	28'x118'		200	
2 A-D (each)	28'x29'	24	32	50

IVY

1 & 4	25'x27'	24	48	49
2	25'x23'	24	40	41
3	25'x29'	20	32	49
5 & 11	24'x32'	24	32	52
6, 7 & 9	22'x32'	24	48	49
8	28'x23'	20	32	49
10	21'x25'	24	32	52

MOUNTAIN LAUREL

1 A-D	103'x24'	72	160	150
1 A	25'x24'	20	32	30
1 B-D (each)	27'x24'	20	32	36
Board Room	14'x25'	Fixed		
2-5 (each)	24'x26'	20	32	30

SPILMAN

2 & 4	60'x36'	120		220
2 A-B & 4 A-B (each)	30'x36'	50		90
3	26'x21'	20		30

JOHNSON SPRING

ROOMS	ROOM SIZE	CLASSROOM	ROUNDS	THEATER
1 A-H	59'x120'		248	Exhibit Hall
1 A-C (each)	29'x27'	20	32	40
1 D	29'x29'	24	32	45
1 E-G (each)	30'x27'	20	32	40
1 H	30'x29'	24	32	45
Board Room	23'x18'	Fixed		
2 A-C	63'x120'	180	432	600
2 A-C (each)	63'x40'	88	144	240
3-5 (each)	40'x40'	40	104	125
3-5 A-D (each)	20'x20'	10		20

RHODODENDRON

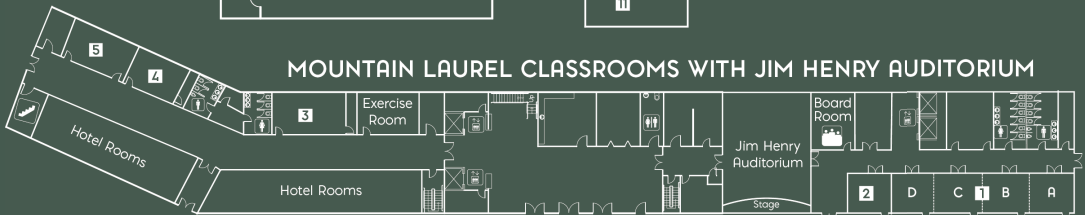
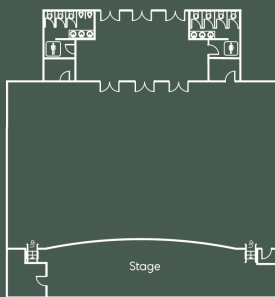
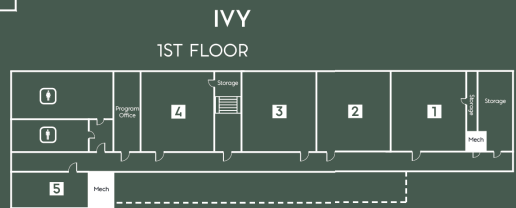
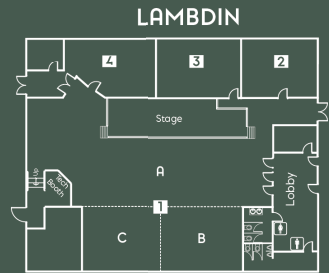
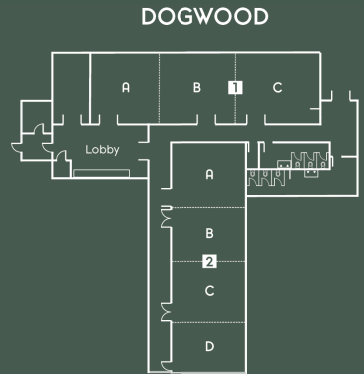
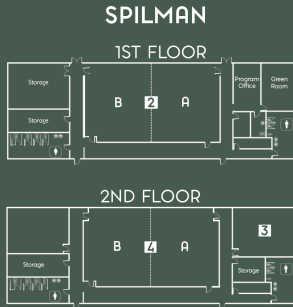
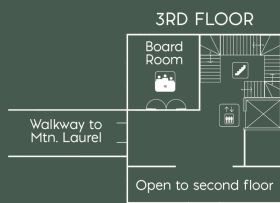
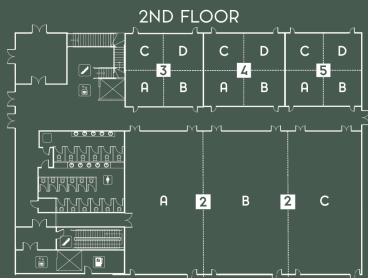
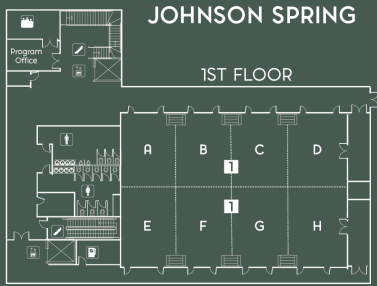
1 A-C	96'x51'	100	200	320
1 A	51'x28'	36	56	80
1 B	51'x38'	44	120	200
1 C	51'x30'	24	40	60
2 A-B	35'x23'	20	48	50
2 A-B (each)	23'x17'	10	16	24
3 A-B	52'x35'	48	120	150
3 A-B (each)	35'x26'	24	48	72
4	28'x24'	Fixed		

LAMB'DIN

1 A	76'x72'	120		350
1 B-C (each)	30'x24'	24		50
2 & 3 (each)	29'x25'	24		50
4	18'x30'	12		36



# MEETING ROOM DIAGRAMS





## Accommodations

Nestled in the majestic beauty of the Blue Ridge Mountains, Ridgecrest's guest rooms are the perfect place to settle in, unwind and move ever-closer in your relationship with God. Ridgecrest offers a wide variety of room styles and configurations to fit your group's size, needs and budget. Our accommodations range from well-appointed suites and deluxe rooms to standard options perfect for families and youth. Wherever you stay, all rooms are within walking distance to meeting spaces and dining areas. Comfortable, clean, relaxing—rest and renewal begin here.



MOUNTAIN LAUREL WEST



MOUNTAIN LAUREL



RHODODENDRON



MOUNTAIN LAUREL EAST



**ROYAL GORGE YOUTH HOUSING**

**Accommodations**

**ADULT**

Mountain Laurel  
Rooms: 228

Rhododendron  
Rooms: 48

Pritchell  
Rooms: 104

**YOUTH**

Maple  
Rooms: 32  
Bed Count: 192

Royal Gorge  
Rooms: 65  
Bed Count: 682

Woodland  
Rooms: 40  
Bed Count: 228

**FAMILY**

Walnut  
Rooms: 48



**PRITCHELL**



**ROYAL GORGE YOUTH**



**WALNUT**



**MOUNTAIN LAUREL WEST KING SUITE**



## On Campus Recreation

Ridgecrest Conference Center's diverse outdoor recreation options are a favorite of guests of all ages. As an added benefit to our guests, many of Ridgecrest's recreational activities are available to you at no additional charge. Complimentary equipment is available for guests to check out at the registration desk in Pritchell.

And wait until you see the hiking trails. White oak and red maple trees seem to reach the clouds, and the mountain laurel grows so thick in places it creates a lush umbrella over the entire pathway. Trails range from easy to moderately difficult, but each affords spectacular views from scenic vantage points.



HIKING



MINIATURE GOLF



THE ARC GYM





IVY FIRE RING

## Recreation Options

- Hiking
- Tennis
- Volleyball
- Basketball
- Recreation Fields
- Playground
- Disc Golf
- Lawn Games
- Miniature Golf\*
- Laser Tag\*
- High Ropes Course\*
- Climbing Wall\*
- Zip Line\*
- Fire Rings\*
- High Adventure Challenge Course\*
- Team Initiatives\*
- Switchback Game Room

*\*Additional fees apply*



HIGH ADVENTURE CHALLENGE COURSE



SWITCHBACK GAME ROOM



ZIP LINE



DNA BRIDGE





## Ridgecrest Dining

The Dining Room in Rhododendron easily accommodates the many guests that enjoy daily breakfast, lunch and dinner buffets for group events. For guests wanting something more intimate, our private catered banquets, receptions and breaks are a perfect choice. Ridgecrest also offers two popular year-round outlets, Clouds Coffee Shop, offering specialty coffee, tea and smoothies and Nibble Nook, featuring ice cream, popcorn, burgers and fries. Both are Ridgecrest traditions you won't want to miss.



CATERING



CLOUDS COFFEE SHOP



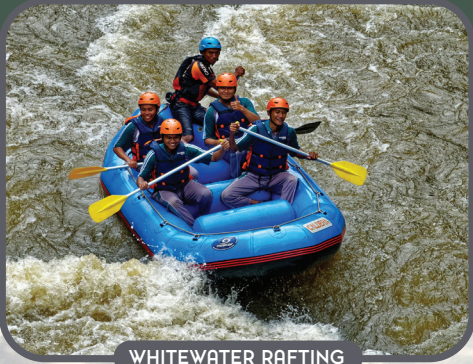
DINING ROOM



**BILTMORE ESTATE**

## Area Attractions

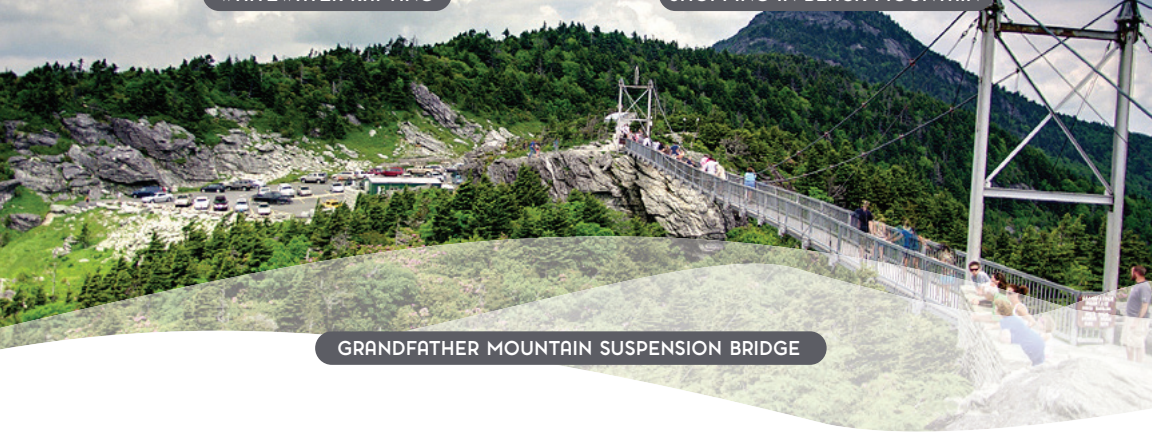
The Asheville/Western North Carolina area is one of the most loved tourism locations in the nation. Stroll through the delightful arts and crafts community of neighboring Black Mountain. Step back into yesteryear with a truly unique 3.5 hour steam locomotive train ride through the spectacular Great Smoky Mountains. Enjoy touring the world-renowned 250-room Biltmore Estate, home of the late George W. Vanderbilt. Or walk across the mile high 228-foot suspension bridge and hike cliffside trails at the captivating Grandfather Mountain. Who needs a water theme park when some of the wildest whitewater rafting sites are close by? There is something for everyone here.



**WHITEWATER RAFTING**



**SHOPPING IN BLACK MOUNTAIN**



**GRANDFATHER MOUNTAIN SUSPENSION BRIDGE**

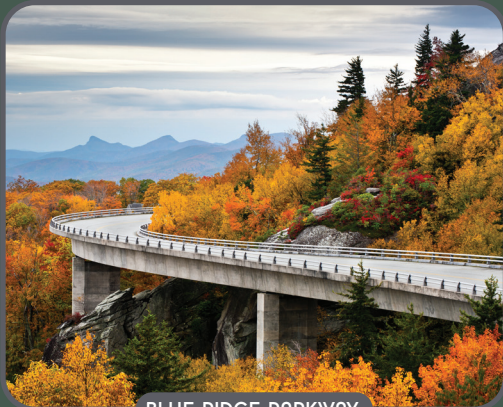


## Location

Ridgecrest is located 15 miles east of Asheville, North Carolina, on Interstate 40 at Exit 66. We are approximately 30 miles from the Asheville Regional Airport and 18 miles from the Asheville Bus Station.

## Distance From

- Atlanta, GA - 3.5 hours
- Birmingham, AL - 6 hours
- Charlotte, NC - 2 hours
- Cincinnati, OH - 6 hours
- Columbia, SC - 2.5 hours
- Jacksonville, FL - 7 hours
- Knoxville, TN - 2 hours
- Louisville, KY - 5.5 hours
- Memphis, TN - 8 hours
- New York, NY - 10.5 hours
- Orlando, FL - 10 hours
- Washington, DC - 7.5 hours



BLUE RIDGE PARKWAY

## Airline Travel

- Asheville Regional Airport - 30 miles (30 minutes)
- Charlotte International Airport - 110 miles (2 hours)
- Greenville-Spartanburg Airport - 90 miles (1.5 hours)